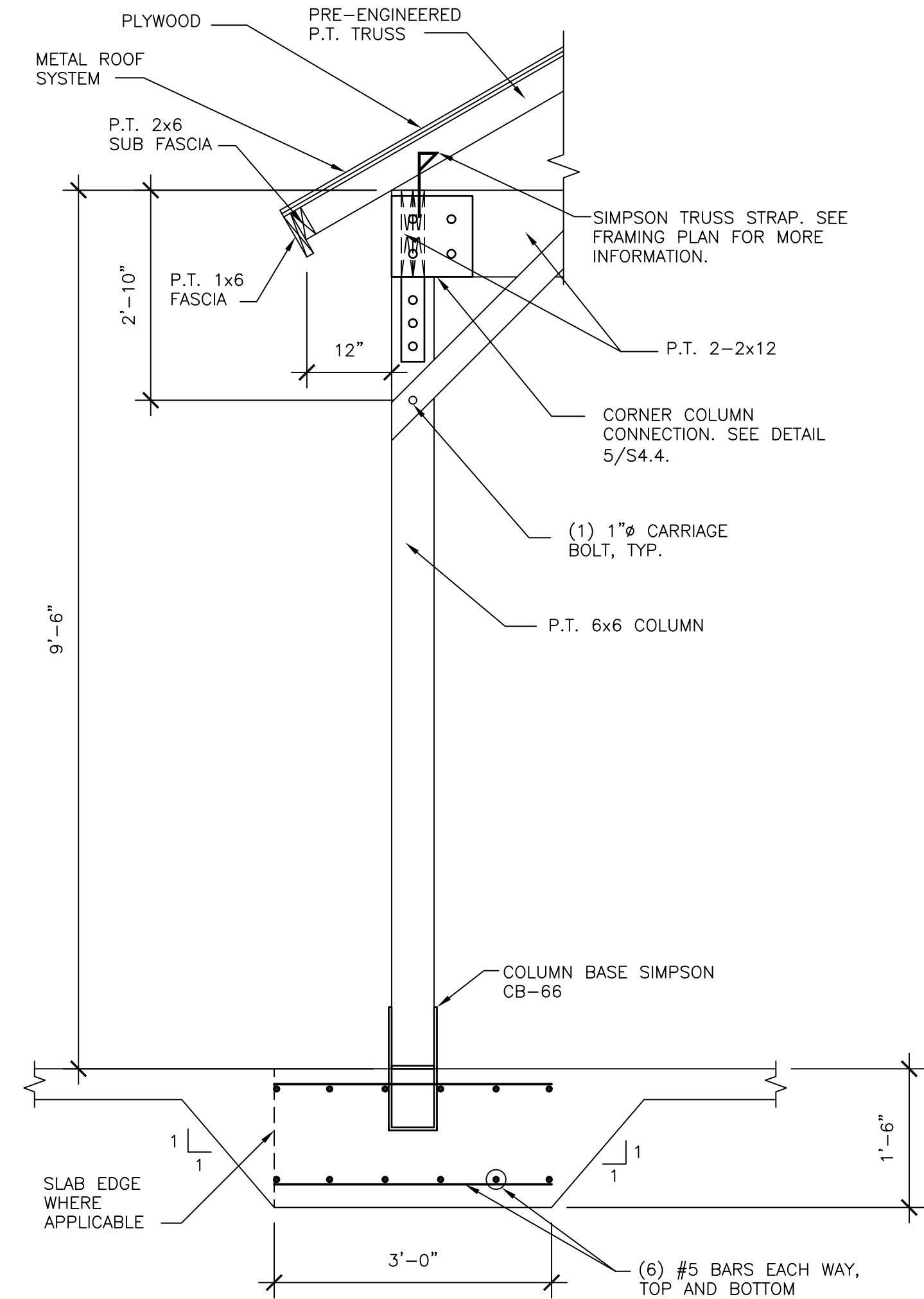
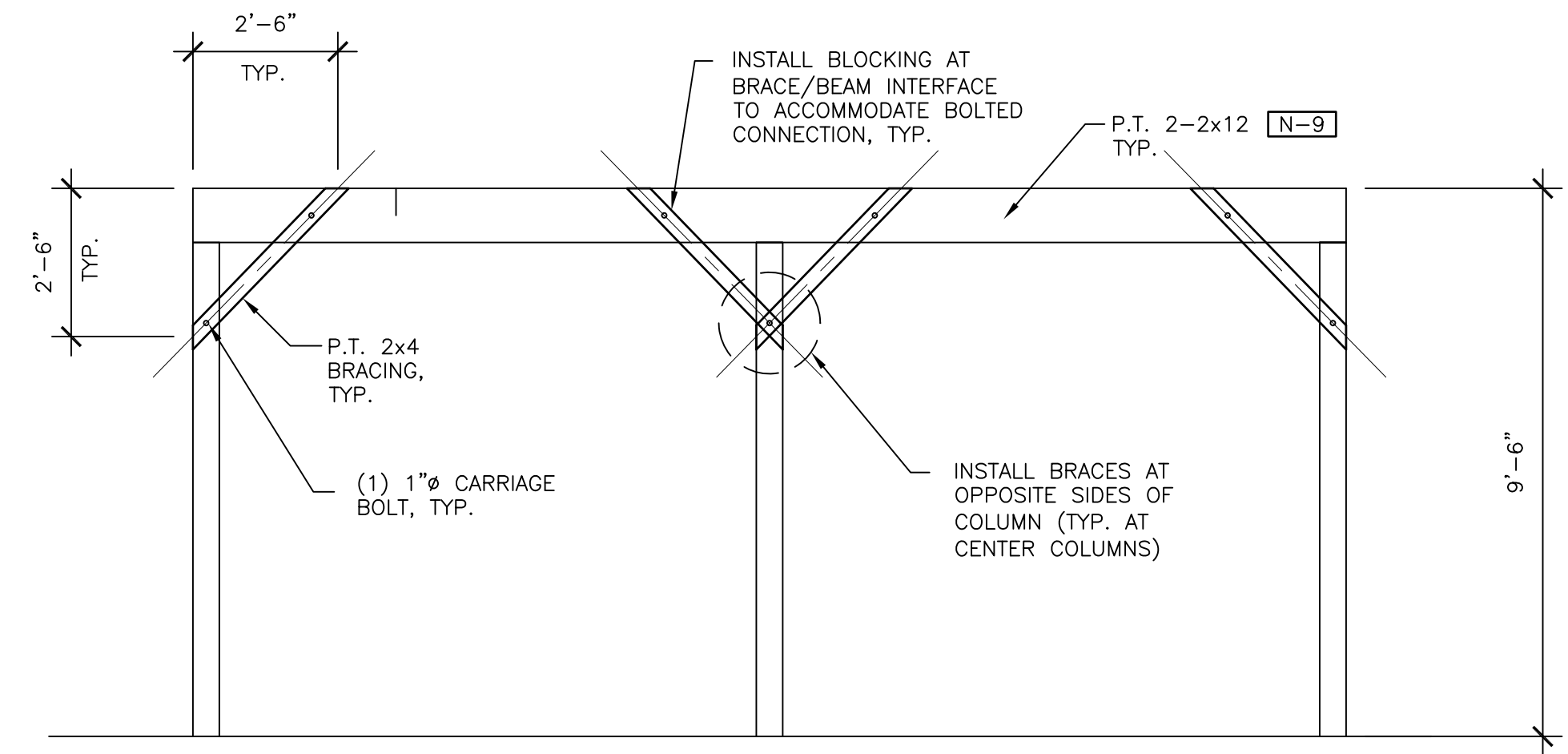


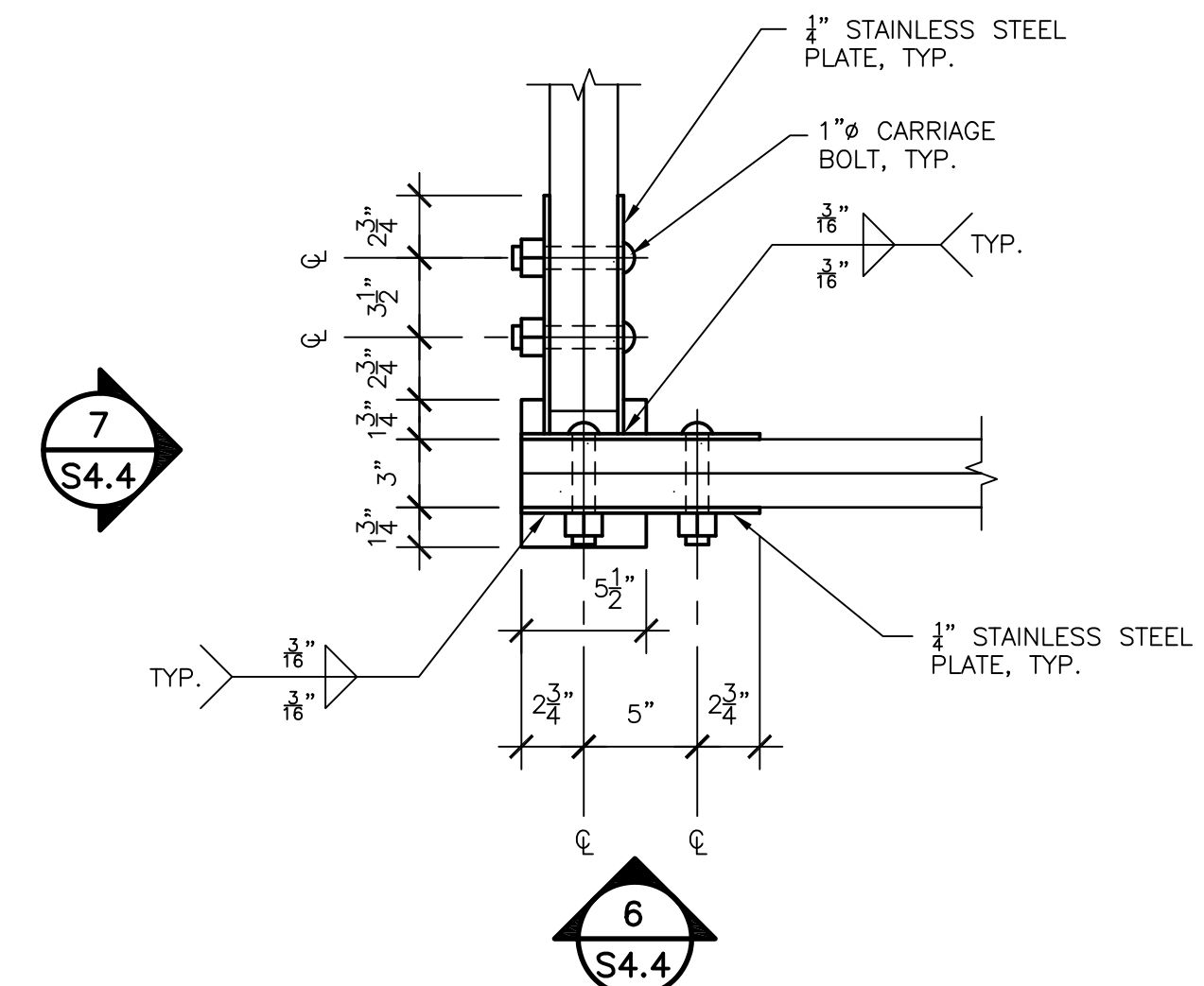
**1 TIMBER FRAMED SHELTER PLAN**  
S4.4 SCALE: 3/8" = 1'-0"



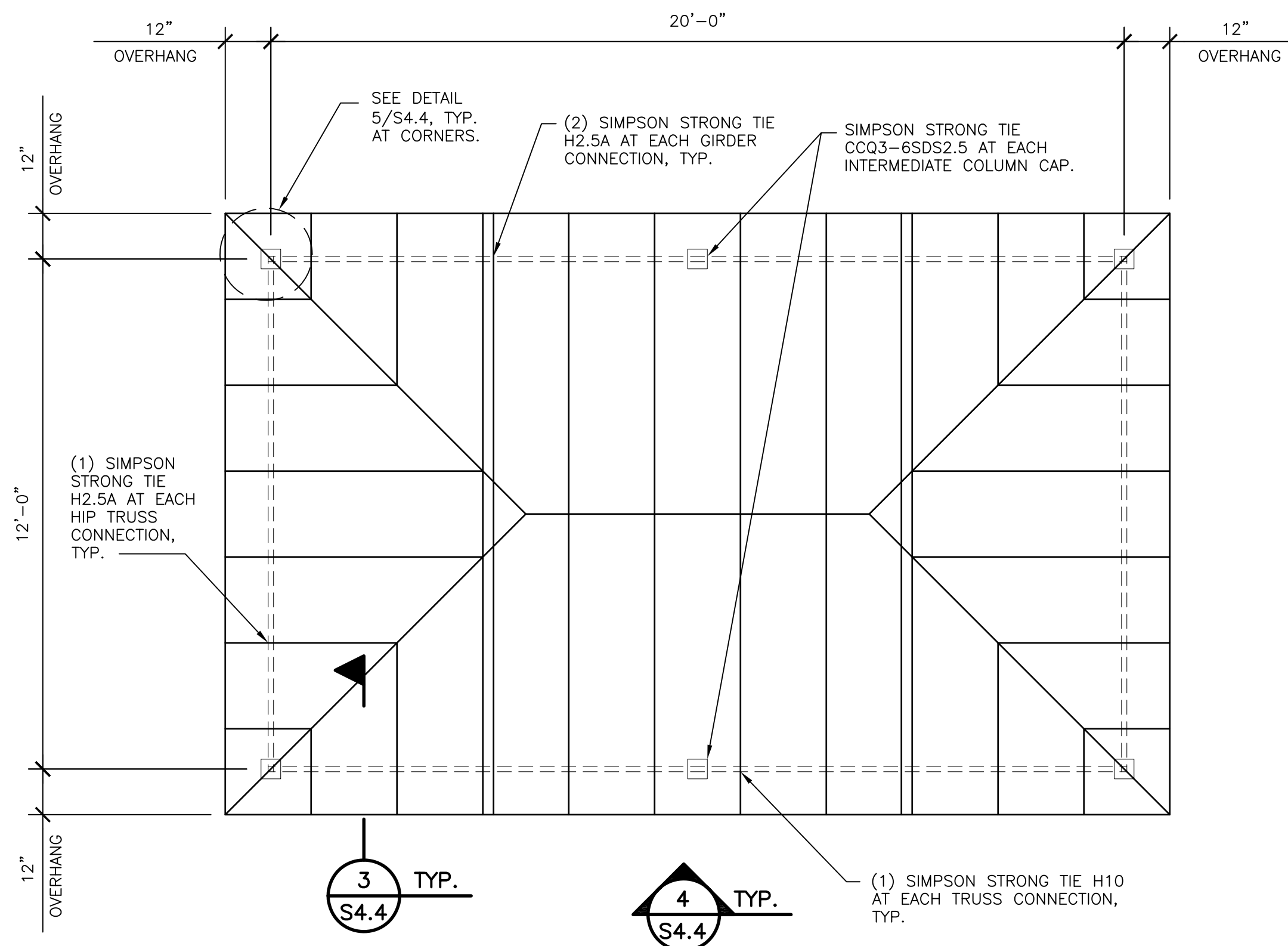
**3 TIMBER FRAMED SHELTER SECTION**  
S4.4 SCALE: 3/4" = 1'-0"



**4 TIMBER FRAMED SHELTER BRACING ELEVATION**  
S4.4 SCALE: 3/8" = 1'-0"



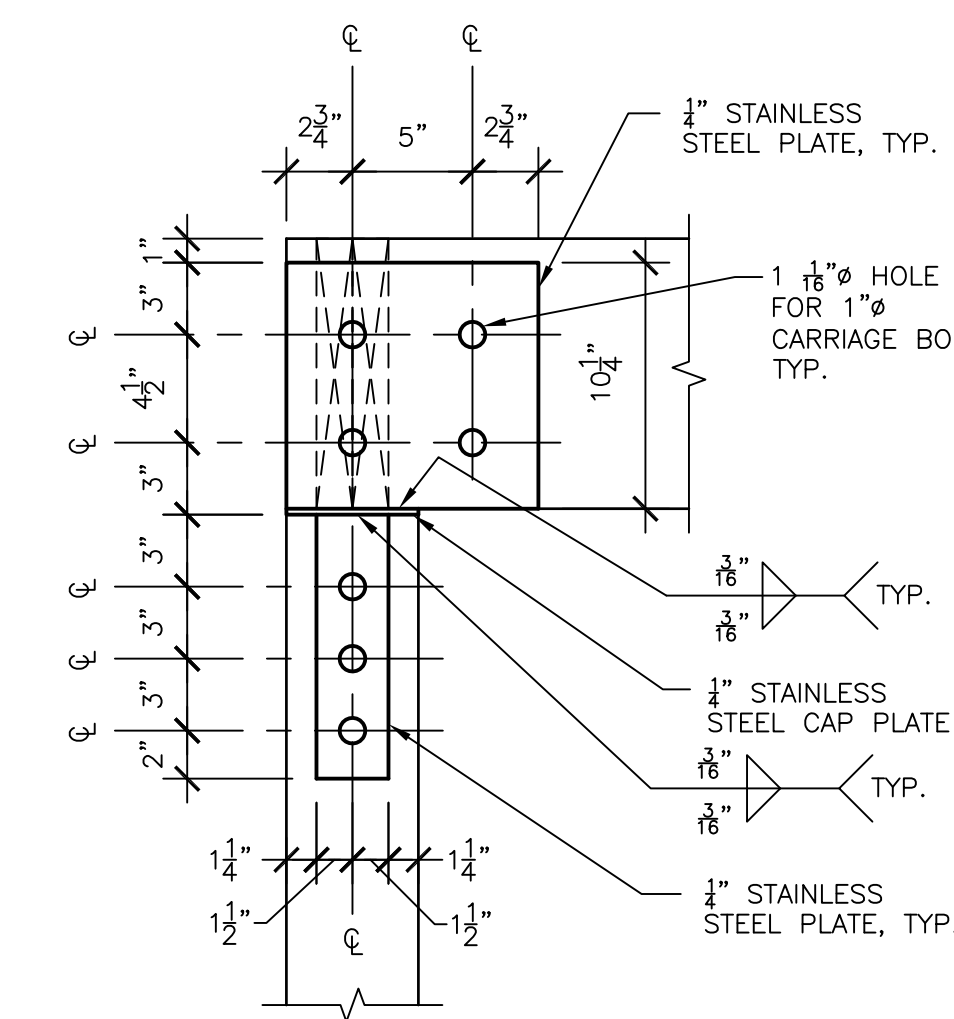
**5 CONNECTION DETAIL**  
S4.4 SCALE: 1 1/2" = 1'-0"



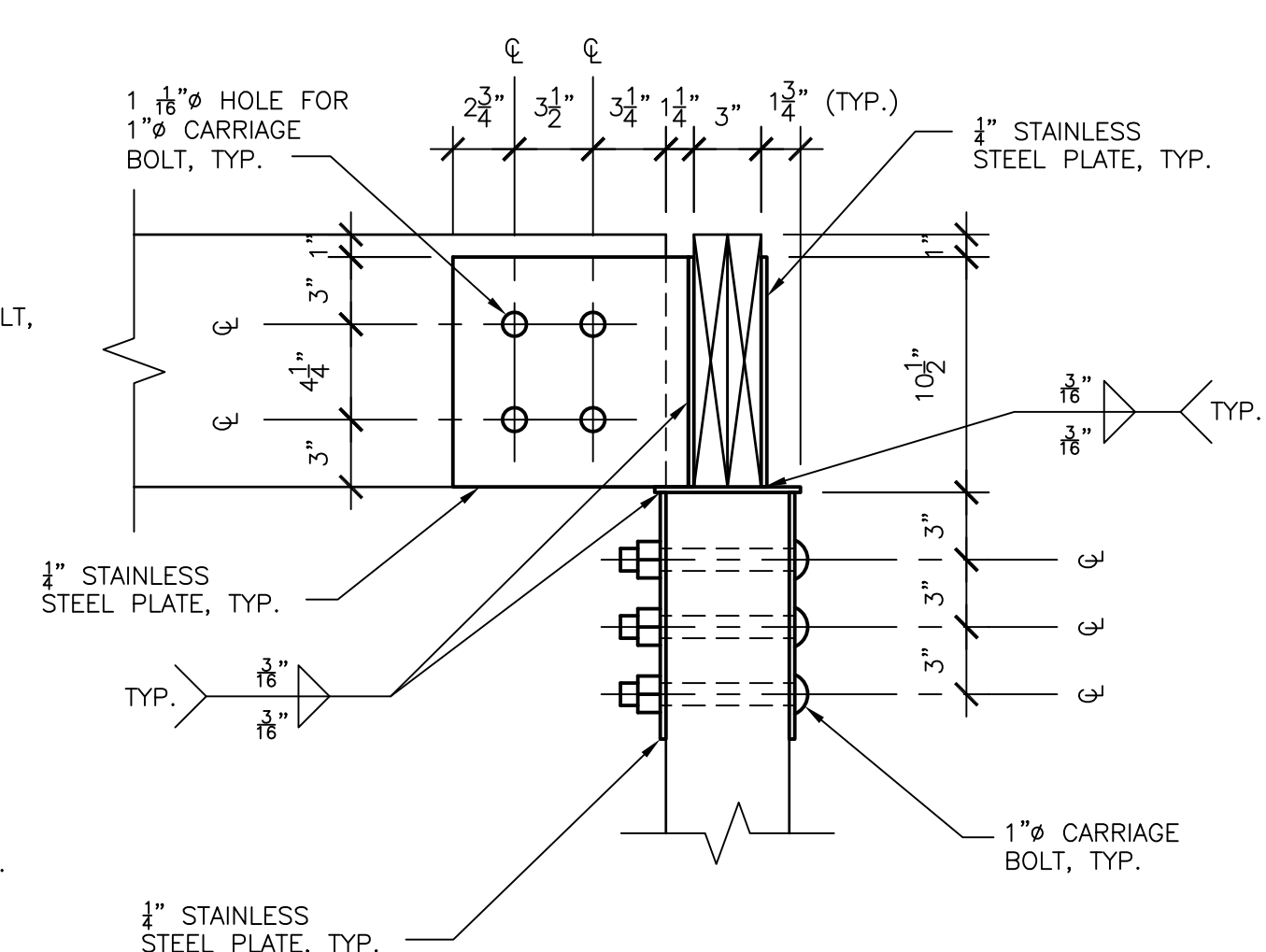
**2 TIMBER FRAMED SHELTER ROOF FRAMING PLAN**  
S4.4 SCALE: 3/8" = 1'-0"

**ROOF FRAMING NOTES**

- N-1 ANY MODIFICATION TO THE TRUSS LAYOUT SHOWN ON THIS PLAN SHALL BE REVIEWED BY THE ENGINEER. SUCH MODIFICATIONS MAY ADVERSELY AFFECT THE STRUCTURAL DESIGN OF BEAMS, COLUMNS, AND FOUNDATIONS.
- N-2 TRUSS LAYOUT PLAN IS DIAGRAMMATIC IN NATURE AND IS PROVIDED FOR ILLUSTRATION PURPOSES ONLY. TRUSS MANUFACTURER SHALL PROVIDE SEPARATE LAYOUT AND TRUSS DESIGN AND CALCULATIONS SIGNED AND SEALED BY FLORIDA REGISTERED PROFESSIONAL ENGINEER.
- N-3 PRE-ENGINEERED WOOD TRUSSES SHALL BE PLACED AT 2'-0" MAX. U.N.O.
- N-4 INSTALL FASTENERS PER MANUFACTURER'S SPECIFICATIONS. DO NOT DRIVE NAILS THROUGH THE TRUSS PLATE ON THE OPPOSITE SIDE OF THE TRUSS WHICH COULD FORCE THE PLATE OFF THE TRUSS.
- N-5 ROOF SHEATHING: SHALL BE 4-PLY 48/24 3/8" APA RATED EXTERIOR EXPOSURE 1. NAILS SHALL BE 10d WITH A MINIMUM PENETRATION (IN FRAMING) OF 1 1/8", MINIMUM NOMINAL WIDTH OF FRAMING MEMBERS SHALL BE 2" (ONE LINE OF FASTENERS REQUIRED). SHEATHING SHALL BE PLACED OVER A MINIMUM OF 2 SPANS WITH THE LONG DIMENSION PERPENDICULAR TO THE MAIN ROOF FRAMING MEMBERS. ADJACENT SHEATHING PANELS SHALL BE STAGGERED 4'-0". NAIL SPACING SHALL BE 4" AT BOUNDARIES AND CONTINUOUS PANEL EDGES, UNLESS OTHERWISE NOTED. NAIL SPACING SHALL BE 4" AT INTERMEDIATE SUPPORTS, UNLESS OTHERWISE NOTED.
- N-6 THE ENGINEER HAS NOT REVIEWED THE PRE-ENGINEERED TRUSS MANUFACTURER'S LAYOUT TO DETERMINE ANY LOAD BEARING CONDITIONS AND RESERVES THE RIGHT TO MAKE ANY CHANGES AFTER TRUSS LOAD INFORMATION IS SUPPLIED TO THE ENGINEER.
- N-7 THE FINAL TRUSS ENGINEERING AND LAYOUT SHALL BE SUBMITTED TO ENGINEER OF RECORD FOR REVIEW PRIOR TO TRUSS MANUFACTURING.
- N-8 ALL CONNECTORS, FASTENERS, PLATES, ETC. SHALL BE STAINLESS STEEL.
- N-9 2-PLY BEAM TO BE FASTENED TOGETHER W/ 10d COMMON NAILS AT 24" O.C., FACE NAILED AT TOP AND BOTTOM, STAGGERED ON OPPOSITE SIDES. 3-10d NAILS, FACE NAILED AT ENDS AND AT EACH SPLICE.



**6 CONNECTION DETAIL**  
S4.4 SCALE: 1 1/2" = 1'-0"



**7 CONNECTION DETAIL**  
S4.4 SCALE: 1 1/2" = 1'-0"

NO.	DATE	COMMENTS

**RENOVATION/RESTORATION PROJECT**

**MARINER BEACH CLUB**  
4220 GULF BOULEVARD  
ST. PETERSBURG BEACH, FLORIDA 33706

**Billereinhardt**  
STRUCTURAL GROUP, INC.  
4014 gulf highway suite 248, tampa, florida 33618  
telephone : 813.908.7203 fax: 813.908.7303  
email : info@billereinhardt.com  
State of Florida Certificate of Authorization No. 9149

MICHAEL H. BILLER  
FL. P.E. NO. 49972

**PLANS AND DETAILS**  
DATE: 2-23-09 DRAWN BY: RC  
JOB NO: 08-132 DESIGN BY: MB/CP/LL

SHEET NO.  
**S4.4**