

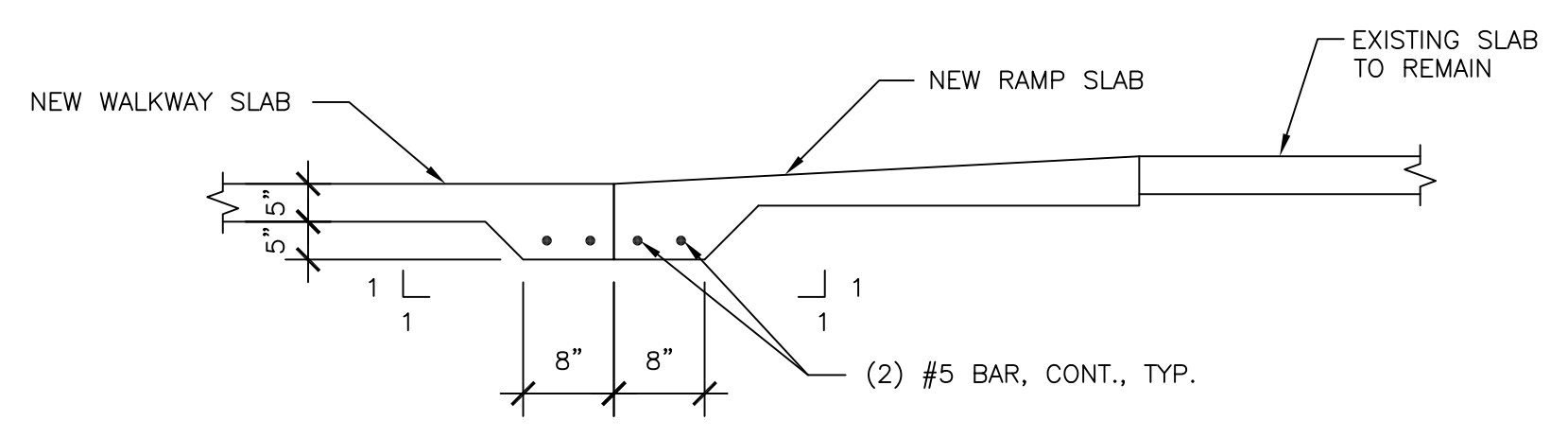
1 SOUTH BUILDING 1ST FLOOR
 S3.2 SCALE: 1/8" = 1'-0"

PLAN NOTES

- N-1** FOR GENERAL STRUCTURAL NOTES SEE DRAWING S1.0 AND S1.1.
- N-2** REMOVE AND REPLACE WALKWAY SLAB ON GRADE AND WALKWAY COLUMNS. EXISTING COLUMN SPACING SHALL BE FIELD VERIFIED WITH NEW COLUMN SPACING SHOWN PRIOR TO REMOVAL. NEW COLUMN SPACING SHOULD MATCH EXISTING COLUMN SPACING AS CLOSE AS POSSIBLE AND NOT EXCEED 14'-0".
- N-3** REMOVE AND REPLACE PATIO SLAB ON GRADE AND BALCONY COLUMNS.
- N-4** REMOVE AND REPLACE TIMBER FRAMED STAIRS AND STAIR COLUMNS. SEE S4.6 FOR NEW CONCRETE STAIR PLAN AND DETAILS.
- N-5** REMOVE AND REPLACE CONCRETE RADIAL STAIRS. SEE S4.5 AND S4.6 FOR NEW CONCRETE STAIR PLAN AND DETAILS.
- N-6** REMOVE SOUTH PORTION OF HALLWAY SLAB. REPLACEMENT SLAB SHALL RAMP DOWNWARD TO THE SOUTH WALKWAY SLAB AT GRADE ELEVATION. MINIMUM THICKNESS = 5 INCHES.

LEGEND

- INDICATES DOOR OR WINDOW TO BE REMOVED AND REPLACED. SEE SHEETS S1.1 AND S1.2 FOR WINDOW AND DOOR SCHEDULE.
- N-X** INDICATES A PLAN NOTE



2 RAMP SLAB SECTION
 S3.2 SCALE: 1/2" = 1'-0"

REVISIONS	
NO.	DATE

RENOVATION/RESTORATION PROJECT
MARINER BEACH CLUB
 4220 GULF BOULEVARD
 ST. PETERSBURG BEACH, FLORIDA 33706

billerreinhardt
 STRUCTURAL GROUP, INC.
 4014 gulf highway suite 248, tampa, florida 33618
 telephone : 813.908.7203 fax : 813.908.7303
 email : info@billerreinhardt.com
 State of Florida Certificate of Authorization No. 9149

FOR THE BEST OF THE PROJECT, ALL WORK SHALL BE DONE IN ACCORDANCE WITH THE PLANS AND SPECIFICATIONS COMPLY WITH THE APPLICABLE RELEVANT BUILDING CODES.

MICHAEL H. BILLER
 FL. P.E. NO. 49972

SOUTH BUILDING 1ST FLOOR
 DATE: 2-23-09 DRAWN BY: RC
 JOB NO: 08-132 DESIGN BY: MB/CP/LL

SHEET NO.
S3.2