

GENERAL STRUCTURAL NOTES

ROUGH CARPENTRY - STRUCTURAL WOOD FRAMING AND SHEATHING - REFER TO SPECIFICATION 06100

- APPLICABLE PUBLICATIONS:
 - WESTERN WOOD PRODUCTS ASSOCIATION PUBLICATION: STANDARD GRADING RULES FOR WESTERN LUMBER
 - AMERICAN WOOD PRESERVERS INSTITUTE STANDARDS: PRESERVATIVE TREATMENT OF WOOD BY PRESSURE METHODS
 - NATIONAL FOREST PRODUCTS ASSOCIATION PUBLICATION: NATIONAL DESIGN SPECIFICATION FOR STRESS GRADED LUMBER AND ITS FASTENINGS
 - WEST COAST LUMBER INSPECTION BUREAU STANDARDS: STANDARD GRADING AND DRESSING RULES FOR DOUGLAS FIR, WEST COAST HEMLOCK, SITKA SPRUCE, WHITE FIR, AND WESTERN RED CEDAR LUMBER, NO. 16
 - SOUTHERN PINE INSPECTION BUREAU: STANDARD GRADING RULES FOR SOUTHERN PINE LUMBER
 - SOUTHERN FOREST PRODUCTS ASSOCIATION
 - NATIONAL BOARD OF FIRE UNDERWRITERS
- NATIONAL BOARD OF FIRE UNDERWRITERS (AMERICAN SOFTWOOD LUMBER STANDARD: NATIONAL INSTITUTE OF STANDARDS AND TECHNOLOGY) AND APPROVED GRADING RULES AND INSPECTION AGENCIES.
- COVER WOOD PRODUCTS TO PROTECT AGAINST MOISTURE. SUPPORT STACKED PRODUCTS TO PREVENT DEFORMATION AND TO ALLOW CIRCULATION.
- DIMENSION LUMBER
 - GRADING AGENCY: SOUTHERN PINE INSPECTION BUREAU, INC. (SPIB)
 - SIZES: NOMINAL SIZES AS INDICATED ON DRAWINGS, S4S
 - MOISTURE CONTENT: S-DRY OR MC19
 - LUMBER: S4S, SOUTHERN PINE NO. 2
- PLYWOOD SHEATHING
 - PS 1 (CONSTRUCTION AND INDUSTRIAL PLYWOOD); NATIONAL INSTITUTE OF STANDARDS AND TECHNOLOGY.
 - APA RATED SHEATHING EXP
- ALL FASTENERS TO BE STAINLESS STEEL FOR HIGH-HUMIDITY AND TREATED WOOD LOCATIONS.
- PRESSURE TREATMENT OF LUMBER ABOVE GRADE SHALL BE AWPA TREATMENT C2 USING WATERBORNE PRESERVATIVE 0.25 LB/CU FT RETENTION.
- FASTENINGS (GENERAL): THE NUMBER AND SIZE OF NAILS, CONNECTING WOOD MEMBERS SHALL NOT BE LESS THAN THOSE SPECIFIED IN TABLE 2304.9.1 OF THE FLORIDA BUILDING CODE 2007.
- ALL PRESSURE TREATED WINDOW AND DOOR BUCKS SHALL BE LESS THAN 1 1/2 INCHES. WINDOW AND DOOR ANCHORS SPECIFIED BY MANUFACTURER SHALL BE SECURELY FASTENED INTO THE MASONRY SUBSTRATE.

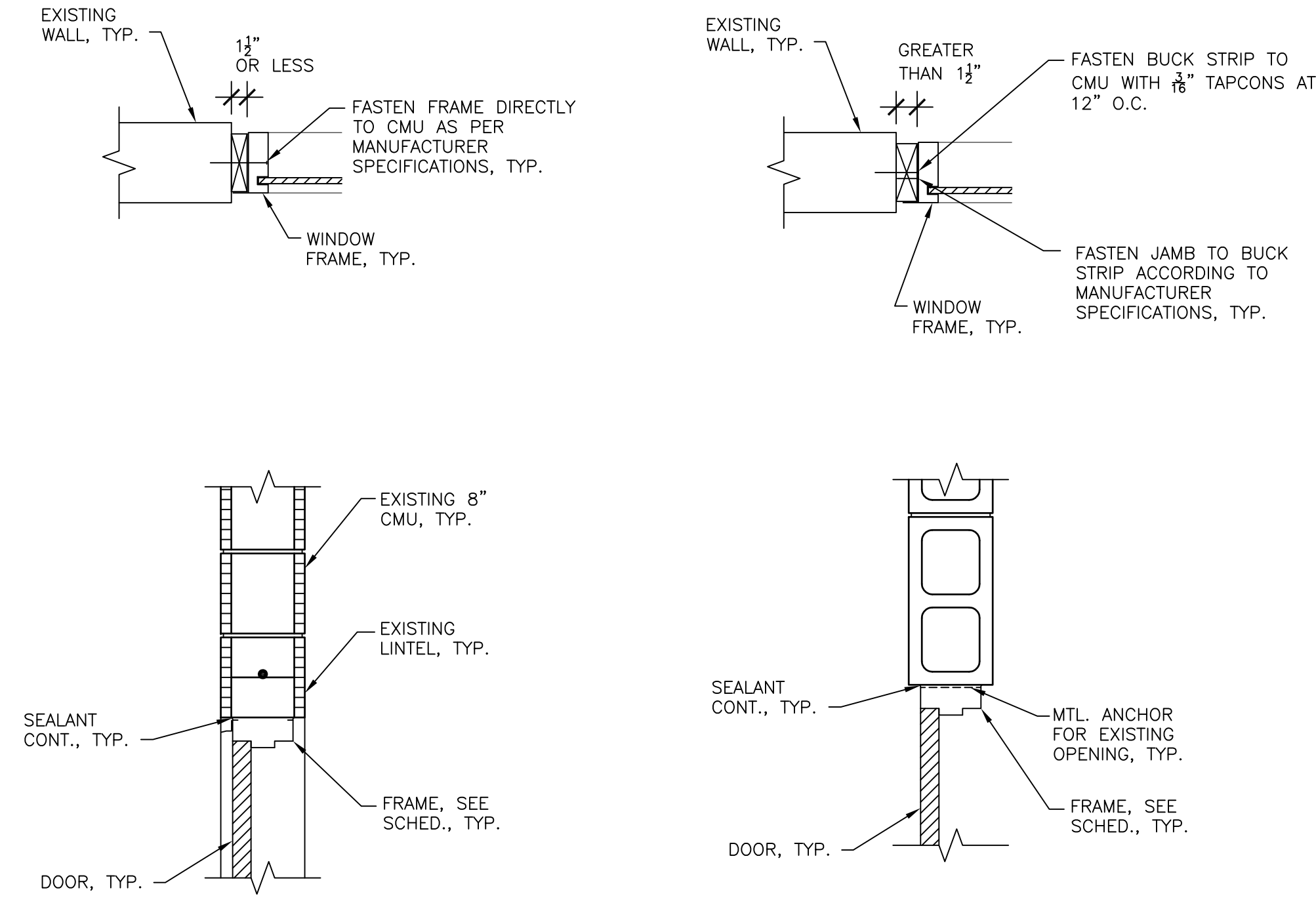
SIMPSON MODEL NO.	DESCRIPTION	TO SUPPORTING MEMBER	TO SUPPORTED MEMBER	FLORIDA PRODUCT APPROVAL NO.
C866	COLUMN BASE	(2) 3/4" Ø BOLTS	-	FL 474.39
H10	STRAP	8 - 8d x 1 1/2"	8 - 8d x 1 1/2"	FL 474
H2.5A	CLIP	5 - 8d	5 - 8d	FL 503
CCG3-6SDS2.5	COLUMN CAP	(14) SDS 1/2"x2 1/2"	(14) SDS 1/2"x2 1/2"	FL 5806

PREFABRICATED WOOD TRUSSES - REFER TO SPECIFICATION 06176

- TRUSSES SHALL BE DESIGNED IN ACCORDANCE WITH THE TRUSS PLATE INSTITUTE (TPI) REQUIREMENTS.
- TRUSSES SHALL BE DESIGNED SO THAT THE TOTAL DEFLECTION UNDER COMBINED DEAD AND LIVE LOADS WILL NOT EXCEED L/360 (WHERE L = LENGTH OF SPAN), NOR SHALL THE LIVE LOAD DEFLECTION EXCEED L/240.
- ROOF TRUSSES ARE TO BE DESIGNED BY THE TRUSS MANUFACTURER TO MEET OR EXCEED THE FOLLOWING LOAD CONDITIONS IN ADDITION TO ALL GOVERNING BUILDING CODES. COMPLETE WITH ALL NECESSARY TEMPORARY OR PERMANENT BRACING, ATTACHMENTS, BRIDGING, ETC., AS MAY BE REQUIRED FOR A COMPLETE ROOF SYSTEM.
 - TOP CHORD LIVE LOAD.....20.0 PSF
 - TOP CHORD DEAD LOAD (SUPERIMPOSED).....10.0 PSF
 - BOTTOM CHORD LIVE LOAD.....10.0 PSF
 - BOTTOM CHORD DEAD LOAD (SUPERIMPOSED).....10.0 PSF
 - TOTAL = 50.0 PSF
- REFER TO SHEET S1.0 FOR WIND LOAD REQUIREMENTS.
- DESIGN IS TO BE BASED ON FRAMING LAYOUT, DIMENSIONS AND LOAD SHOWN. DEVIATION FROM THIS MUST BE COORDINATED WITH THE PROJECT ENGINEER.
- TRUSS MANUFACTURER TO MAINTAIN NUMBER OF TRUSS PLIES INDICATED ON DRAWINGS- INCREASE CHORD/WEB MEMBERS TO ACCOMPLISH THIS.
- TRUSS MANUFACTURER SHALL PROVIDE CALCULATIONS SIGNED AND SEALED BY AN ENGINEER LICENSED IN THE STATE OF FLORIDA DEMONSTRATING THE STRENGTH AND SERVICEABILITY OF THE ROOFING SYSTEM. THESE CALCULATIONS SHALL ALSO SPECIFICALLY IDENTIFY UPLIFT AND SHEAR FORCES AND CONNECTIONS SELECTED TO RESIST THESE FORCES. BOTTOM CHORD BRACING SHALL BE IN COMPLIANCE WITH TPI RECOMMENDATIONS AND DESIGNED TO PROVIDE ADEQUATE
- THE ARCHITECT/ENGINEER HAS NOT REVIEWED THE PRE-ENGINEERED TRUSS MANUFACTURER'S LAYOUT TO DETERMINE ANY LOAD CONDITIONS AND RESERVES THE RIGHT TO MAKE ANY CHANGES AFTER TRUSS LOAD INFORMATION IS SUPPLIED TO THE ARCHITECT/ENGINEER.

MARK	UNIT	TYPE	MATERIAL	ROUGH OPENING		NOTES
				WIDTH	HEIGHT	
S101	EA.	A	ALUMINUM	3'-2"	4'-3 1/2"	
S102	EA.	B	ALUMINUM	6'-2"	4'-3 1/2"	
S103	EA.	C	ALUMINUM	9'-2 1/2"	4'-3 1/2"	
S104	EA.	C	ALUMINUM	9'-3"	4'-3 1/2"	
S105	EA.	B	ALUMINUM	6'-2"	4'-3 1/2"	
S106	EA.	C	ALUMINUM	9'-3"	4'-3 1/2"	
S107	EA.	B	ALUMINUM	6'-2"	4'-3 1/2"	
S108	EA.	C	ALUMINUM	9'-3"	4'-3 1/2"	
S109	EA.	C	ALUMINUM	9'-3"	4'-3 1/2"	
S110	EA.	B	ALUMINUM	6'-2"	4'-3 1/2"	
S111	EA.	D	ALUMINUM	6'-2"	5'-2 1/2"	
S112	EA.	E	ALUMINUM	4'-10"	5'-2 1/2"	
S113	EA.	F	ALUMINUM	9'-3"	5'-2 1/2"	
S114	EA.	G	ALUMINUM	15'-0"	5'-2 1/2"	
S115	EA.	H	ALUMINUM	6'-2 1/2"	5'-2 1/2"	
S116	EA.	I	ALUMINUM	7'-6"	5'-2 1/2"	
S117	EA.	M	ALUMINUM	3'-0"	2'-0"	
S118	EA.	M	ALUMINUM	3'-0"	2'-0"	
S119	EA.	M	ALUMINUM	3'-0"	2'-0"	
S120	EA.	K	ALUMINUM	6'-2 1/2"	3'-3 1/2"	
S121	EA.	J	ALUMINUM	2'-11"	2'-3"	
S122	EA.	K	ALUMINUM	6'-2 1/2"	3'-3 1/2"	
S123	EA.	J	ALUMINUM	2'-11"	2'-3"	
S124	EA.	J	ALUMINUM	2'-11"	2'-3 1/2"	
S125	EA.	K	ALUMINUM	6'-2 1/2"	3'-3 1/2"	
S126	EA.	J	ALUMINUM	2'-11"	2'-3"	
S127	EA.	J	ALUMINUM	2'-11"	2'-3"	
S128	EA.	L	ALUMINUM	2'-11"	2'-3"	
S129	EA.	J	ALUMINUM	2'-11"	2'-3"	
S130	EA.	J	ALUMINUM	2'-11"	2'-3"	
S131	EA.	J	ALUMINUM	2'-11"	2'-3"	
S132	EA.	J	ALUMINUM	2'-11"	2'-3"	
S133	EA.	J	ALUMINUM	2'-11"	2'-3"	
S134	EA.	K	ALUMINUM	6'-2 1/2"	3'-3 1/2"	
S201	EA.	A	ALUMINUM	3'-2"	4'-3 1/2"	
S202	EA.	B	ALUMINUM	6'-2"	4'-3 1/2"	
S203	EA.	C	ALUMINUM	9'-3"	4'-3 1/2"	
S204	EA.	C	ALUMINUM	9'-3"	4'-3 1/2"	
S205	EA.	B	ALUMINUM	6'-2"	4'-3 1/2"	
S206	EA.	C	ALUMINUM	9'-3"	4'-3 1/2"	
S207	EA.	B	ALUMINUM	6'-2"	4'-3 1/2"	
S208	EA.	C	ALUMINUM	9'-3"	4'-3 1/2"	
S209	EA.	C	ALUMINUM	9'-3"	4'-3 1/2"	
S210	EA.	B	ALUMINUM	6'-2"	4'-3 1/2"	
S211	EA.	C	ALUMINUM	9'-3"	4'-3 1/2"	
S212	EA.	B	ALUMINUM	6'-2"	4'-3 1/2"	
S213	EA.	J	ALUMINUM	2'-11"	2'-3"	
S214	EA.	J	ALUMINUM	2'-11"	2'-3"	
S215	EA.	J	ALUMINUM	2'-11"	2'-3"	
S216	EA.	K	ALUMINUM	6'-2 1/2"	3'-3 1/2"	
S217	EA.	J	ALUMINUM	2'-11"	2'-3"	
S218	EA.	J	ALUMINUM	2'-11"	2'-3"	
S219	EA.	J	ALUMINUM	2'-11"	2'-3"	
S220	EA.	K	ALUMINUM	6'-2 1/2"	3'-3 1/2"	
S221	EA.	J	ALUMINUM	2'-11"	2'-3"	
S222	EA.	J	ALUMINUM	2'-11"	2'-3"	
S223	EA.	J	ALUMINUM	2'-11"	2'-3"	
S224	EA.	J	ALUMINUM	2'-11"	2'-3"	
S225	EA.	J	ALUMINUM	2'-11"	2'-3"	
S226	EA.	J	ALUMINUM	2'-11"	2'-3"	
S227	EA.	J	ALUMINUM	2'-11"	2'-3"	
S228	EA.	J	ALUMINUM	2'-11"	2'-3"	
S229	EA.	J	ALUMINUM	2'-11"	2'-3"	
S230	EA.	J	ALUMINUM	2'-11"	2'-3"	
S231	EA.	K	ALUMINUM	6'-2 1/2"	3'-3 1/2"	

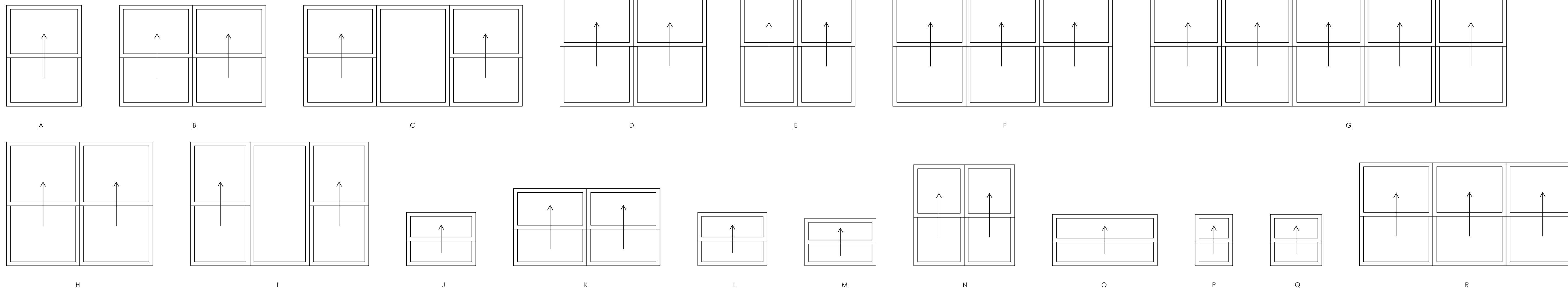
MARK	UNIT	TYPE	MATERIAL	ROUGH OPENING		NOTES
				WIDTH	HEIGHT	
N101	EA.	A	ALUMINUM	3'-2"	4'-3"	
N102	EA.	B	ALUMINUM	6'-2"	4'-3"	
N103	EA.	N	ALUMINUM	4'-3 1/2"	4'-3 1/2"	
N104	EA.	C	ALUMINUM	9'-3 1/2"	4'-3"	
N105	EA.	C	ALUMINUM	9'-3 1/2"	4'-3"	
N106	EA.	C	ALUMINUM	9'-3 1/2"	4'-3"	
N107	EA.	B	ALUMINUM	6'-2"	4'-3"	
N108	EA.	C	ALUMINUM	9'-3 1/2"	4'-3"	
N109	EA.	C	ALUMINUM	9'-3 1/2"	4'-3"	
N110	EA.	J	ALUMINUM	3'-0"	2'-2"	
N111	EA.	J	ALUMINUM	3'-0 1/2"	2'-2"	
N112	EA.	J	ALUMINUM	3'-1 1/2"	2'-2 1/2"	
N113	EA.	O	ALUMINUM	4'-5 1/2"	2'-2"	
N114	EA.	O	ALUMINUM	4'-5 1/2"	2'-2"	
N115	EA.	P	ALUMINUM	1'-7"	2'-2"	
N116	EA.	O	ALUMINUM	4'-5"	2'-2"	
N117	EA.	O	ALUMINUM	4'-6"	2'-4"	
N118	EA.	O	ALUMINUM	4'-5 1/2"	2'-4"	
N119	EA.	K	ALUMINUM	6'-2 1/2"	3'-3 1/2"	
N120	EA.	J	ALUMINUM	2'-11"	2'-3 1/2"	
N121	EA.	J	ALUMINUM	2'-11"	2'-3 1/2"	
N122	EA.	J	ALUMINUM	2'-11"	2'-3 1/2"	
N123	EA.	J	ALUMINUM	2'-11"	2'-3"	
N124	EA.	K	ALUMINUM	6'-2"	3'-3 1/2"	
N125	EA.	K	ALUMINUM	6'-2 1/2"	3'-3 1/2"	
N126	EA.	J	ALUMINUM	2'-11 1/2"	2'-3"	
N127	EA.	J	ALUMINUM	2'-11"	2'-3 1/2"	
N128	EA.	K	ALUMINUM	6'-2 1/2"	3'-3 1/2"	
N129	EA.	J	ALUMINUM	2'-11"	2'-3"	
N130	EA.	Q	ALUMINUM	2'-2"	2'-2"	
N131	EA.	J	ALUMINUM	2'-11"	2'-3 1/2"	
N132	EA.	K	ALUMINUM	6'-2 1/2"	3'-3 1/2"	
N133	EA.	J	ALUMINUM	2'-11"	2'-3 1/2"	
N134	EA.	R	ALUMINUM	9'-3 1/2"	4'-4"	
N201	EA.	A	ALUMINUM	3'-2"	4'-3"	
N202	EA.	B	ALUMINUM	6'-2"	4'-3"	
N203	EA.	N	ALUMINUM	4'-3 1/2"	4'-3"	
N204	EA.	C	ALUMINUM	9'-3 1/2"	4'-3"	
N205	EA.	C	ALUMINUM	9'-3 1/2"	4'-3"	
N206	EA.	C	ALUMINUM	9'-3 1/2"	4'-3"	
N207	EA.	B	ALUMINUM	6'-2"	4'-3"	
N208	EA.	C	ALUMINUM	9'-3 1/2"	4'-3"	
N209	EA.	C	ALUMINUM	9'-3 1/2"	4'-3"	
N210	EA.	J	ALUMINUM	3'-1"	2'-3"	
N211	EA.	J	ALUMINUM	3'-0 1/2"	2'-3"	
N212	EA.	J	ALUMINUM	3'-1 1/2"	2'-3"	
N213	EA.	O	ALUMINUM	4'-5 1/2"	2'-2"	
N214	EA.	O	ALUMINUM	4'-5 1/2"	2'-2"	
N215	EA.	P	ALUMINUM	1'-7"	2'-2"	
N216	EA.	O	ALUMINUM	4'-5"	2'-2"	
N217	EA.	O	ALUMINUM	4'-6"	2'-2"	
N218	EA.	O	ALUMINUM	4'-5 1/2"	2'-2"	
N219	EA.	K	ALUMINUM	6'-2 1/2"	3'-3 1/2"	
N220	EA.	J	ALUMINUM	2'-11"	2'-3 1/2"	
N221	EA.	J	ALUMINUM	2'-11"	2'-3 1/2"	
N222	EA.	J	ALUMINUM	2'-11"	2'-3 1/2"	
N223	EA.	J	ALUMINUM	2'-11"	2'-3"	
N224	EA.	J	ALUMINUM	2'-11"	2'-3 1/2"	
N225	EA.	K	ALUMINUM	6'-2 1/2"	3'-3 1/2"	
N226	EA.	K	ALUMINUM	6'-2 1/2"	3'-3 1/2"	
N227	EA.	J	ALUMINUM	2'-11"	2'-3 1/2"	
N228	EA.	J	ALUMINUM	2'-11"	2'-3 1/2"	
N229	EA.	K	ALUMINUM	6'-2 1/2"	3'-3 1/2"	
N230	EA.	J	ALUMINUM	2'-11"	2'-3 1/2"	
N231	EA.	Q	ALUMINUM	2'-2"	2'-2"	
N232	EA.	J	ALUMINUM	2'-11"	2'-3 1/2"	
N233	EA.	K	ALUMINUM	6'-2 1/2"	3'-3 1/2"	
N234	EA.	J	ALUMINUM	2'-11"	2'-3 1/2"	
N235	EA.	R	ALUMINUM	9'-3 1/2"	4'-4"	



DOOR AND WINDOW DETAILS

SCALE: N.T.S.

WINDOW TYPES



NO.	DATE	REVISIONS	COMMENTS

RENOVATION/RESTORATION PROJECT

MARINER BEACH CLUB
4220 GULF BOULEVARD
ST. PETERSBURG BEACH, FLORIDA 33706

Billerreinhart
STRUCTURAL GROUP, INC.
4014 gum highway suite 248, tampa, florida 33618
telephone : 813.908.7203 fax : 813.908.7203
email : info@billerreinhart.com
State of Florida Certificate of Authorization No. 9149

MICHAEL H. BILLER
FL. P.E. NO. 49972

GENERAL NOTES AND WINDOW AND DOOR SCHEDULES AND DETAILS

DATE: 2-23-09 DRAWN BY: RC
JOB NO: 08-132 DESIGN BY: MB/CP/LL

SHEET NO.
S1.1