



December 22, 2009

Ms. Sandy Faulconer
Mariner Beach Club Condominium Association, Inc.
34938 Double Eagle Court
Zephyrhills, FL 33541

Telephone: (813) 715-4690
Email: geminisandy0528@aim.com

**Subject: Field Observation Report 43 – Tuesday December 15, 2009
Mariner Beach Club – Structural Restoration
St. Petersburg Beach, Florida**

Dear Ms. Faulconer:

Biller Reinhart Structural Group, Inc. (BillerReinhart) conducted a site visit on Tuesday, December 15, 2009. Michael Biller, P.E. and Lee Levoir, P.E. of BillerReinhart visited the project site. The purpose of the site visit was to attend the weekly construction meeting and review structural items under construction. The following items were discussed and/or observed:

1. Placement of the steel reinforcement was reviewed for the CMU knee wall adjacent to the south beach shelter. The reinforcement was observed to be dowelled into a concrete substrate with an insufficient thickness. The specified Hilti Re 500 was not used at these locations. The footing detail specified was missing from the remaining knee wall construction at this location. The deficiencies were communicated to the Contractor and will be addressed prior to placement of the concrete.
2. The framing and connections observed to have been installed at unit 303 are not compatible with the truss layout and are required to be engineered. Billerreinhart will provide the Contractor with appropriate framing and uplift connection hardware designs. Refer to Figure 1.
3. Concrete placement was observed for the at-grade breezeway slab. Refer to Figure 2.
4. The uplift connections observed to have been installed at the south beach shelter are not compatible with the truss layout and are required to be engineered. Billerreinhart will provide the Contractor with appropriate uplift connection designs based on load reactions provided by the Truss Engineer. Refer to Figure 3.

5. Installation of the paver system was observed to be in progress at the time of the site visit. Refer to Figure 4.



Figure 1

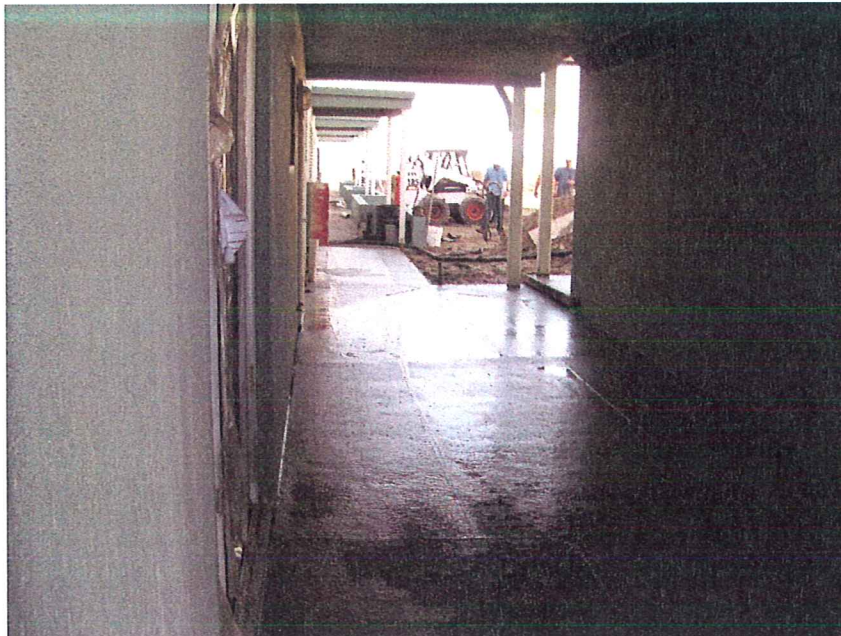


Figure 2



Figure 3



Figure 4

Field Observation Report 43 – Tuesday December 15, 2009
Mariner Beach Club – Structural Restoration
St. Petersburg Beach, Florida

Please note that construction observation by the engineer or engineer's staff does not relieve the contractor of his obligations under the under the construction contract – including but not limited to accuracy, means and methods of construction, and responsibility for jobsite safety.

Sincerely,

Biller Reinhart Structural Group, Inc.

State of Florida Certificate of Authorization No. 9149



12/23/09

Michael H. Biller, P.E., President
Florida P.E. No. 49972



Lee Levoir, P.E.
Senior Structural Engineer

Distribution: Addressee

Mariner Beach Club

Mr. Jeffrey P. Wharton (Vacation Resorts International)
jeff.wharton@vriresorts.com

Marty Kehoe (Wilson Kehoe Miller)
marty@wkmcorp.com

Greg Bowen (Engineering Matrix)
gregb@engmtx.com